



# Plain English Allergen Labelling (PEAL)

Issued Jan 2024

From 25 February 2024, food businesses are required to meet the new Plain English Allergen Labelling (PEAL) requirements when declaring food allergens in writing. Food products that are produced and labelled before 25 February 2024 and comply with the existing labelling requirements (pre-PEAL) can be sold until 25 February 2026.

## What has changed on allergen labelling requirements?

Allergen information on packaged food labels will be labelled using certain **required names** in bold text and in a **specific location on the label**. This should make it easier to identify if a mandatory declared allergen is in the packaged food.

There will be 21 mandatory declared allergens in this change which will include individual tree nuts, molluscs and individual cereals must all be declared separately.

### Existing Declared Allergens



### New Mandatory Declared Allergens



## What will these new requirements mean to you from 25 February 2024?

- We must **continue to provide accurate allergen information** to our customers for them to make informed choices.
- When communicating to our customers in writing e.g. front-of-house display labels declaring allergens, we need to use **specific names** to declare food allergens.
- When labelling packaged food items for a retail sale, we must **follow the new labelling requirements**.
- The Allergen Declaration Card form has been reviewed to align with the specific food allergen names.



SEE



CORE



SHARE

Food Safety

# Plain English Allergen Labelling (PEAL)

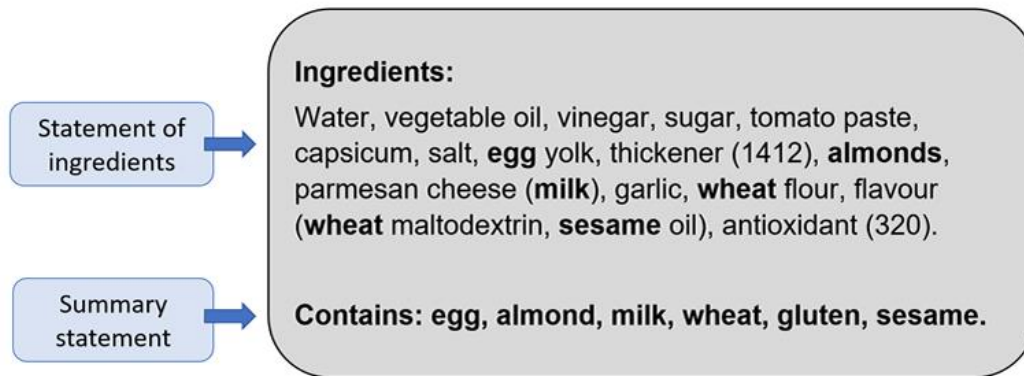
Issued Jan 2024

## How to read new packaged food labels (i.e. incoming goods labels)?

On the packaged food labels, the mandatory declared allergens will be

- 1) listed with specific names alongside the actual ingredient names on the statement of ingredient, and
- 2) in the “Contains” summary statement.

This is shown in the example below:



Source: 2021 Food Industry Guide to Allergen Management and Labelling for Australia and New Zealand

## Next Steps

- Review packaged food labels and front-of-house display cards at your site(s) to ensure they meet the new requirements by 25 February 2024.
- Download training materials and supporting resources from Food Control Plan [SharePoint page](#) for staff training.
- Make sure your teams are aware of these Plain English Allergen Labelling requirements.
- Contact your manager for clarification.
- Join our Safety Webinar at 13:30 every Wed if you have any further questions.